

CERTIFIED LAND CORNER RECORDATION

DESCRIPTION OF CORNER EVIDENCE FOUND, AND ORIGINAL RECORD (If known)

LOCATION 1/4 S.6 S.5 T.13N., R.64W. 6th P.M.	Found 5" x 7" Granite boulder with "1/4" chiseled on south face. Chiseled "X" on top of stone. G.L.O. record - Granite boulder, 18" x 7" x 5" - Edwin James and Alfred M. Rogers, Deputy Surveyors, 6 June 1871.
--	---

DESCRIPTION OF MONUMENT AND ACCESSORIES ESTABLISHED TO PERPETUATE THE ORIGINAL LOCATION OF THIS CORNER:

At the corner: Not remonumented.

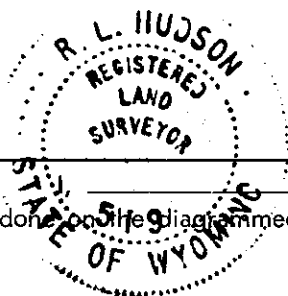
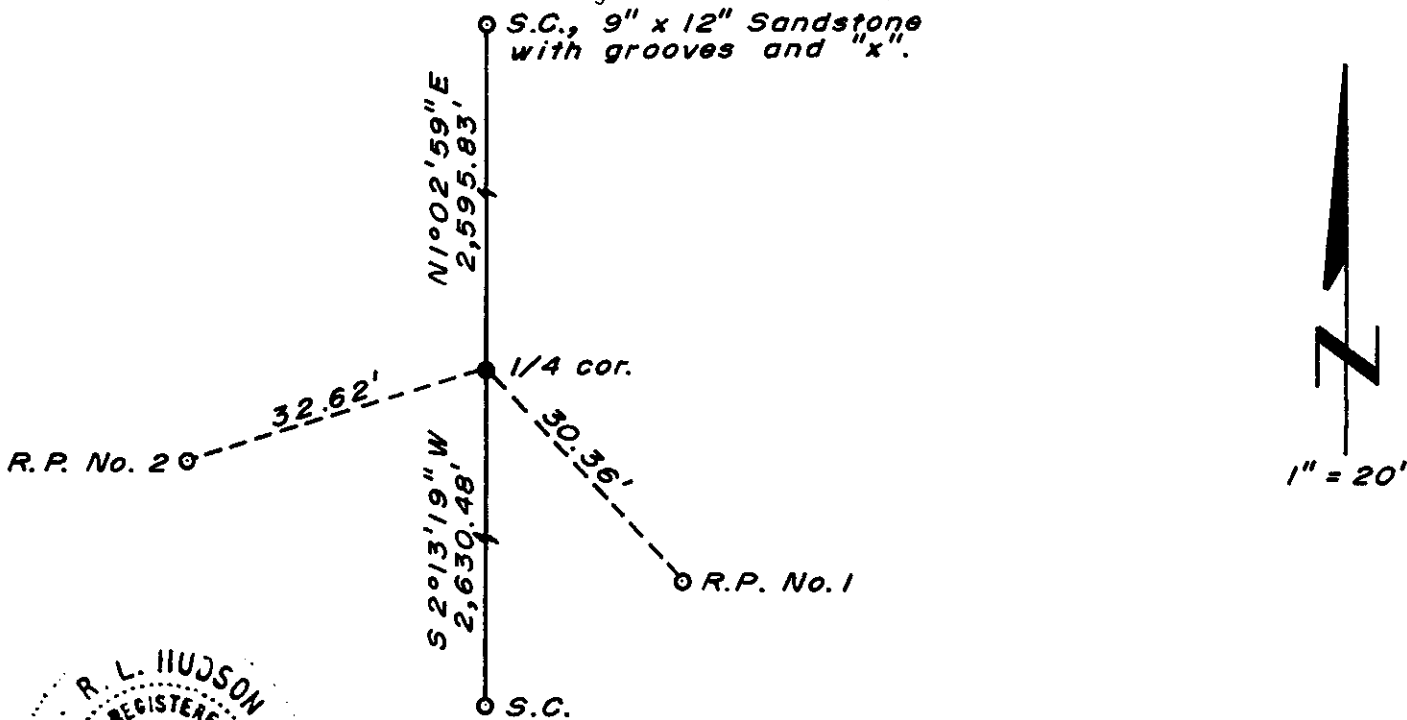
Accessories: A 5/8" dia. x 24" long rebar with 1 1/2" dia. aluminum cap bears S 43° 32' E, 30.36 feet distant. (Stamped R.P. NO. 1)

A 5/8" dia. x 24" long rebar with 1 1/2" dia. aluminum cap bears S 73° 03' W, 32.62 feet distant. (Stamped R.P. NO. 2)

SKETCH, WITH COURSE AND DISTANCE TO ADJACENT CORNER IF DETERMINED IN THIS SURVEY.

(May Sketch or Paste Reproduction on Reverse Side.)

Basis of Bearing - By solar observation.
 Distances based on measurements by electronic means.



R. L. Hudson certify that I have carefully performed or reviewed the work done on the diagrammed corner as reported on this recordation form and approve the same.

R. L. Hudson Wyoming L.S. No. 519
 Signature of Surveyor Registration No.

STATE OF WYOMING,
 Office of Clerk and Recorder,
 County of Taramie

534720

This "corner record" was filed for record on the 6 day of July, 1977, was noted on the cross-index plat and is assigned page No. _____, in book No. _____.

Janet C. Whitehead
 County Official

Cross Index No. <u>C-5</u>	T. <u>13</u>	R. <u>64</u>	Mer.
_____	T. _____	R. _____	Mer.
_____	T. _____	R. _____	Mer.
_____	T. _____	R. _____	Mer.
_____	T. _____	R. _____	Mer.
_____	T. _____	R. _____	Mer.

